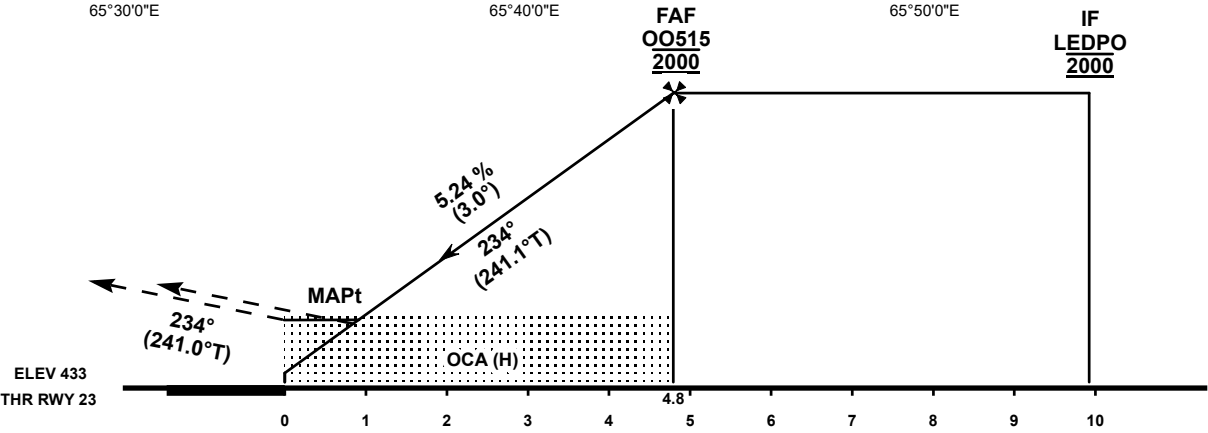
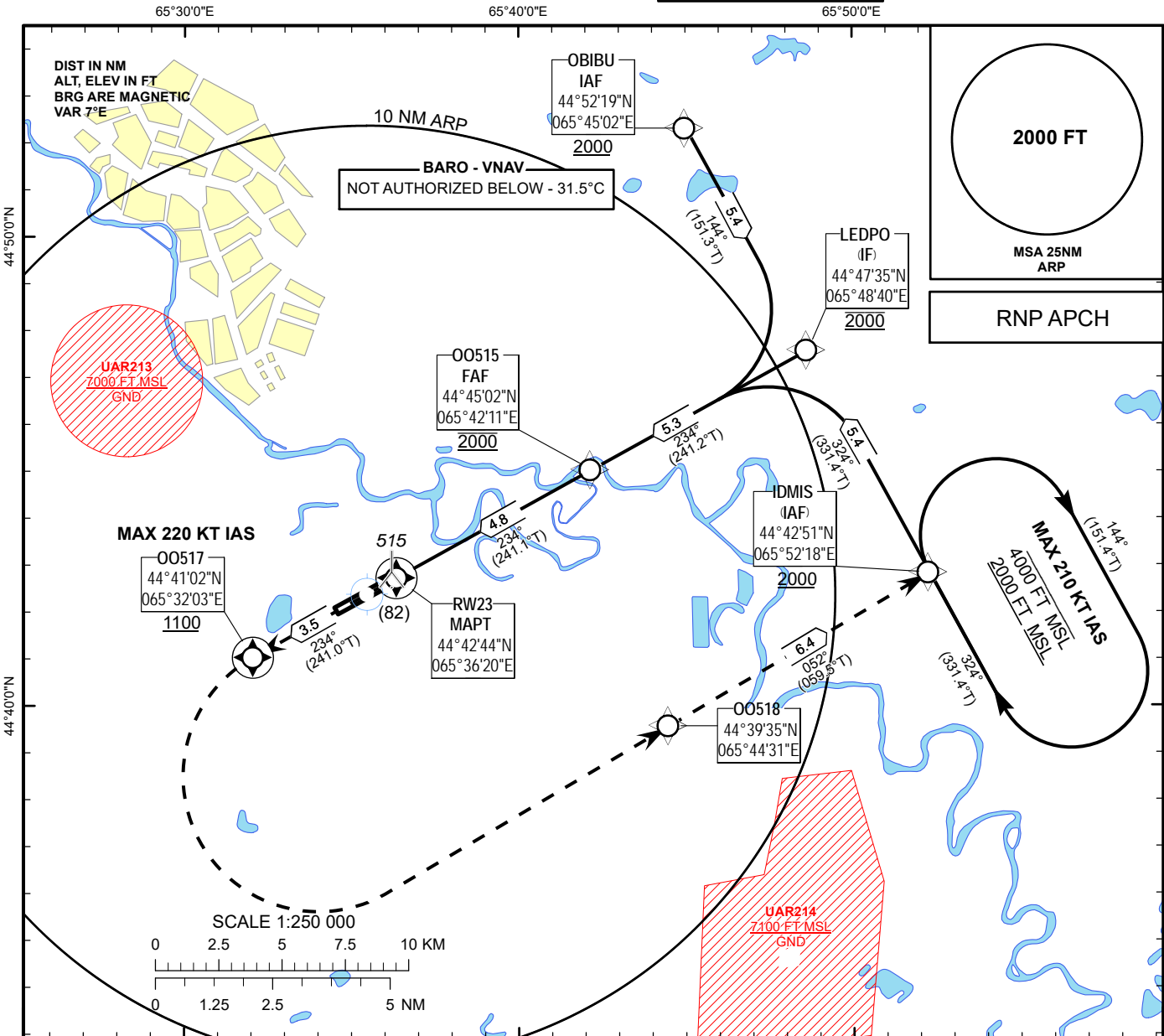


INSTRUMENT  
APPROACH  
CHART - ICAO

AERODROME ELEV **433FT**  
HEIGHTS RELATED TO  
AD ELEV

KYZYLORDA TOWER 120.9  
KYZYLORDA ATIS (EN) 134.9  
KYZYLORDA ATIS (RU) 122.9

KYZYLORDA  
RNP RWY 23



OCA(OCH)		A	B	C	D
Straight	LNAV	770(340)			
	LNAV/VNAV	650(218)	660(228)	670(238)	680(248)

DIST THR	4	3	2	1
ALTITUDE	1760	1440	1120	810
HEIGHT	1327	1007	687	377

GS	kt	80	100	120	140	160	180
Rate of descent	ft/min	420	530	640	740	850	950
FAF/FAP - THR (4.8 NM)	min:s	3:35	2:52	2:23	2:03	1:47	1:35

CHANGE: New chart.

TABULAR DESCRIPTION

RNP RWY23											
Serial Number	Path Descriptor	Waypoint Identifier	Fly - over	Course °M(°T)	Magnetic Variation(°)	Distance (NM)	Turn Direction	Altitude (FT)	Speed (KT)	VPA (°)	Navigation Specification
010	IF	IDMIS	-	-	+7.5	-	-	+2000	-	-	RNP APCH
020	TF	LEDPO	-	324(331.4)	+7.5	5.4	-	@2000	-	-	RNP APCH
010	IF	OBIBU	-	-	+7.5	-	-	+2000	-	-	RNP APCH
020	TF	LEDPO	-	144(151.3)	+7.5	5.4	-	@2000	-	-	RNP APCH
010	IF	LEDPO	-	-	+7.5	-	-	@2000	-	-	RNP APCH
020	TF	OO515	-	234(241.2)	+7.5	5.3	-	@2000	-	-	RNP APCH
030	TF	RW23	Y	234(241.1)	+7.5	4.8	-	@483	-	-3	RNP APCH
040	CF	OO517	Y	234(241.0)	+7.5	3.5	-	+1100	-220	+1.4	RNP APCH
050	DF	OO518	-	-	+7.5	-	L	-	-	+1.4	RNP APCH
060	TF	IDMIS	-	052(059.5)	+7.5	6.4	-	+2000	-	+1.4	RNP APCH
070	HM	IDMIS	-	324(331.4)	+7.5	5.0	R	+2000/-4000	-210	-	RNP APCH

WAYPOINT COORDINATES

RNP RWY23		
Waypoint Identifier	Coordinates	
IDMIS	444250.70N	0655217.80E
LEDPO	444734.94N	0654839.98E
OBIBU	445219.10N	0654501.50E
OO515	444502.28N	0654211.42E
RW23	444243.85N	0653620.40E
OO517	444102.01N	0653202.96E
OO518	443934.82N	0654430.72E